

## Obtaining and Installing IBM Rational Rose Enterprise

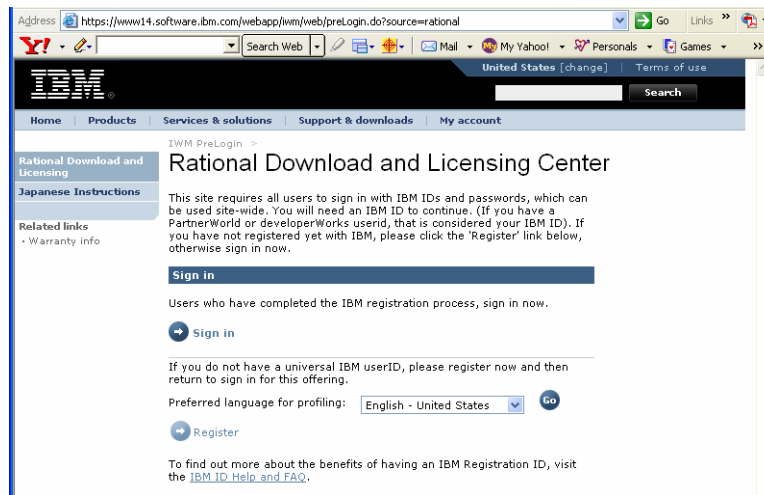
In order to use IBM Rational Rose on your personal computer or notebook, you'll have to take the following steps:

1. Download Rose from the [IBM website](#)
2. Install
3. Request a license
4. Activate the license

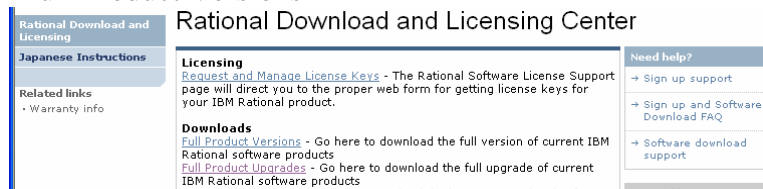
The rest of the note guides you through the above four steps.

### Downloading Rose

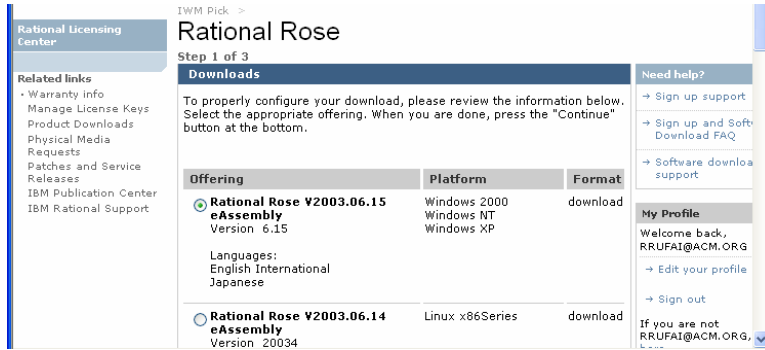
1. Visit <https://www6.software.ibm.com/reg/rational/rational-i>.



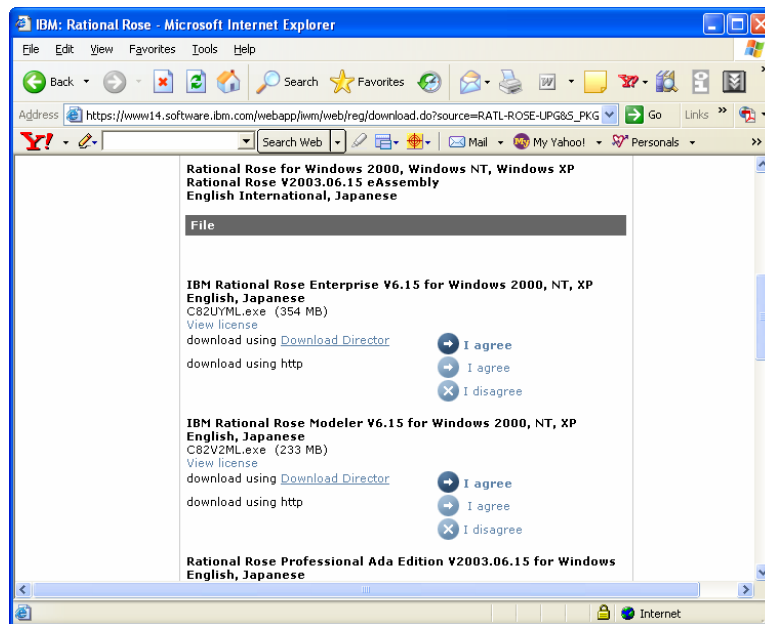
2. Sign in with an IBM user ID if you already have one, other wise register.
3. Click on “Full Product Versions”



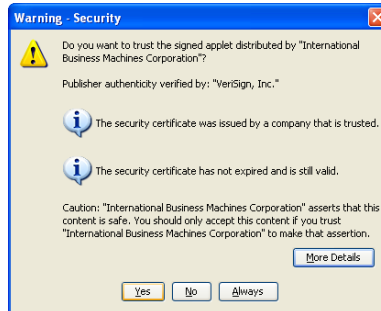
4. Click on Rational Rose
5. Pick the later version (topmost one) as shown in the figure below.



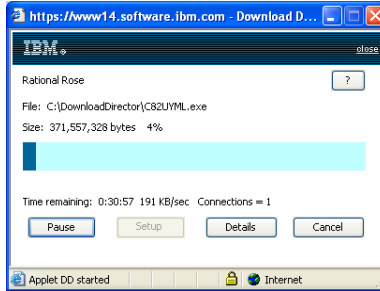
6. Scroll down the page and click “Continue”. You should see a page similar to the figure below.



7. Click on one of the two “I agree” buttons to start the download.
8. If you get the following screen, click on “Yes” or “Always”.

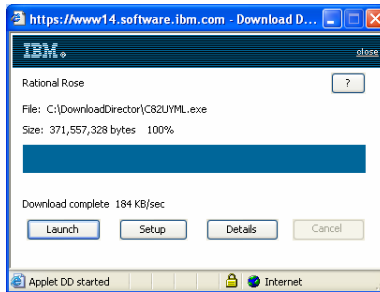


9. You may see a download progress page that looks like the figure below.

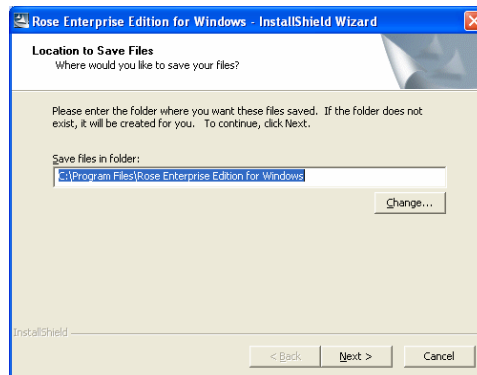


## Installing Rose

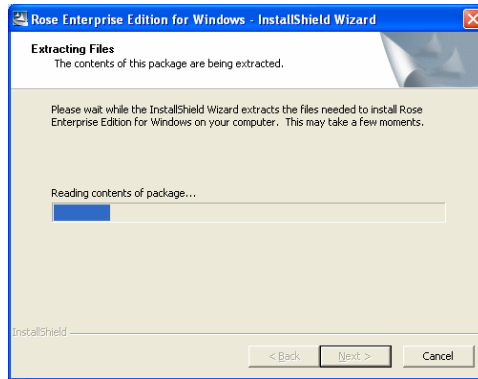
1. To install the Rational Software, click on the **Setup** button in the applet window below or simply double-click on the downloaded file, “**C82UYML.exe**”. You may see the following installation windows sequentially. Just follow the instruction.



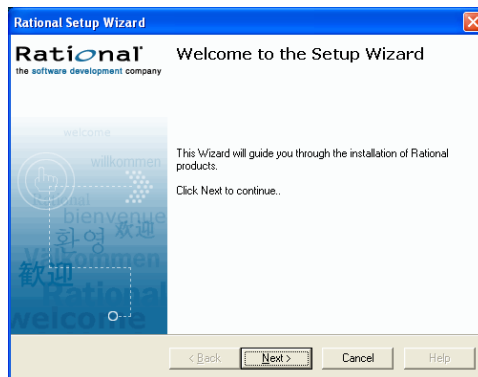
2. Click **Launch** to start the installation. You should see a window such as the following come on.



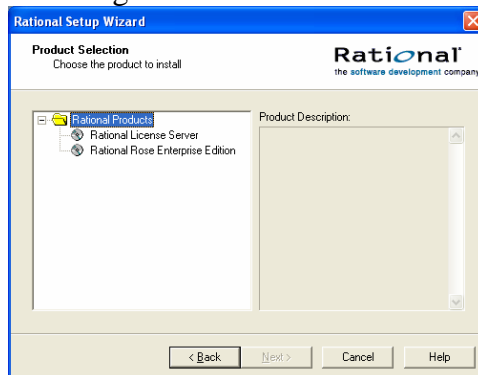
3. Click “**Next**” after you decide the folder name to install the software.



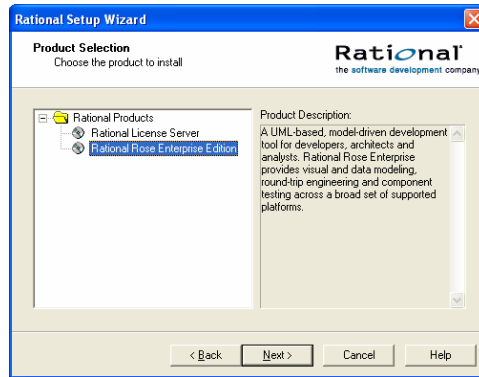
4. The installation will take a few minutes to complete. Then, you would see a window such as the following.



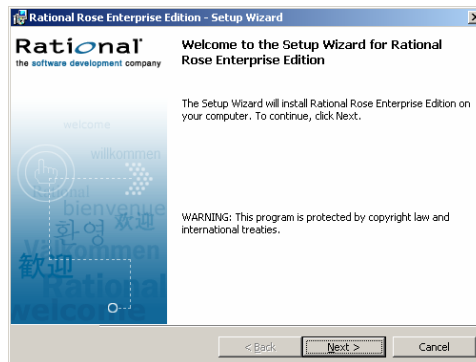
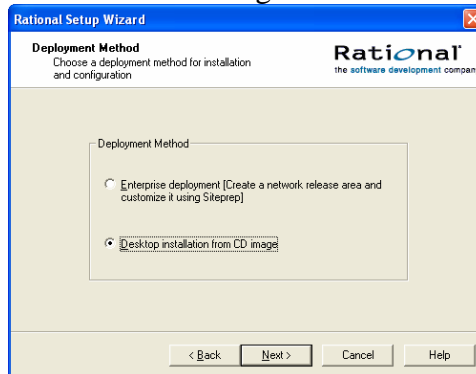
5. Click *Next*, to see the following window.



6. Select “*Rational Rose Enterprise Edition*”, and click Next. Do not click “*Rational License Server*” at this time. We will configure the license later. You can run the licensing batch file before you install the software if you would like to use the software immediately after installation, however, you can ignore licensing now and install the software first.

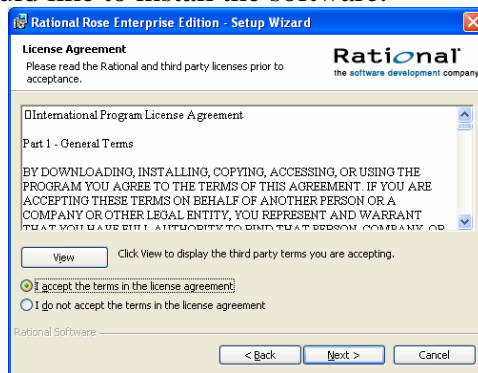


7. Select “Desktop installation from CD image”.

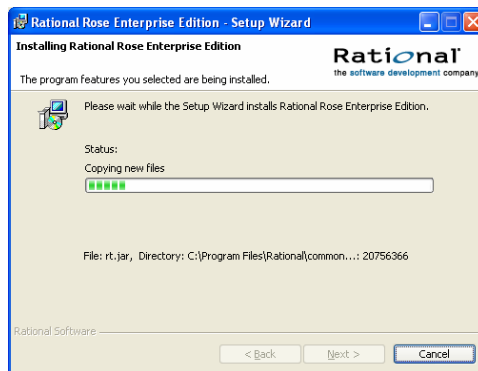
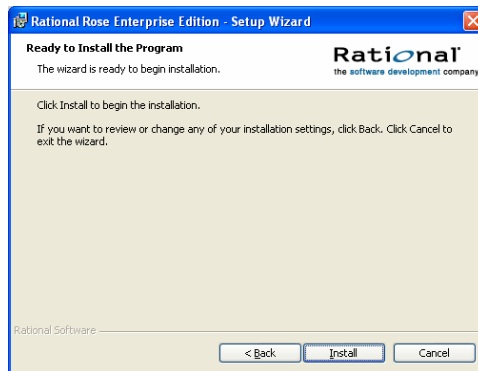
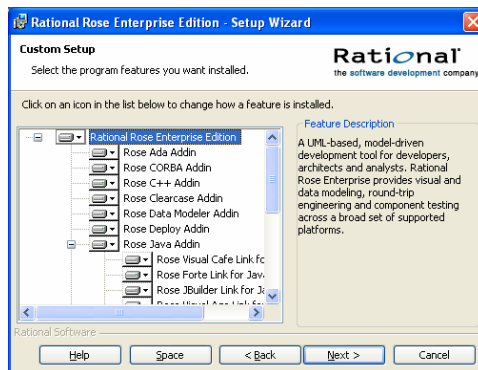
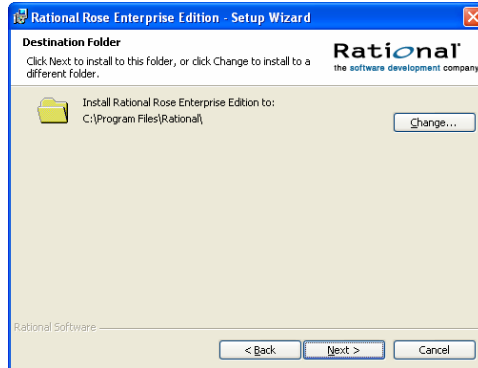




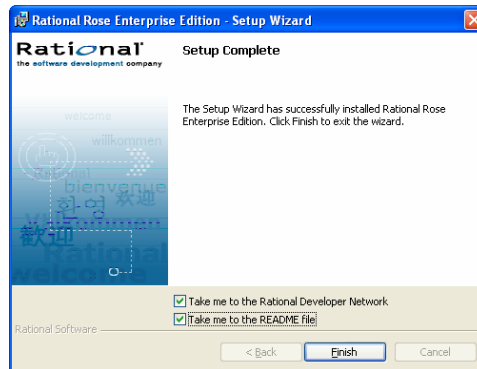
8. Read the License Agreement, and select “I accept the terms in the license agreement” if you would like to install the software.



9. Decide the Destination Folder to install the Software, and click Next.



10. This step will take a while, so you might want to take a break and pour yourself some coffee. After installing the software, the Setup Complete window appears.



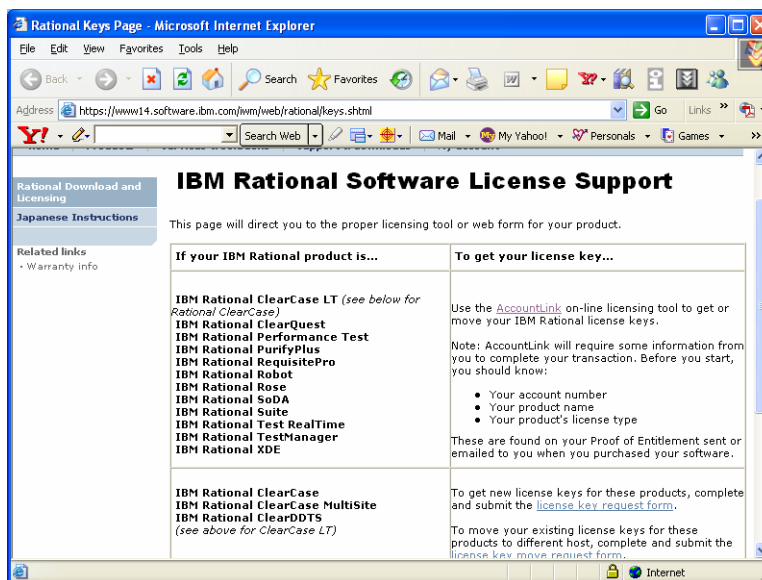
11. The License Key Administrator Wizard may launch automatically at the end of the installation. Follow the licensing instruction in the next section.

## Obtaining and importing a license file

Once you complete the installation, now you are ready to use the Rational Software. However, you need to obtain a license file first.

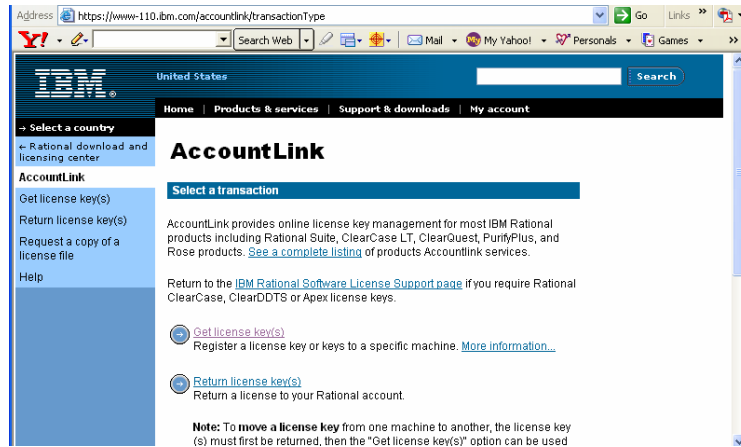
## Obtaining a license file

1. Visit <https://www6.software.ibm.com/reg/rational/rational-i> again
2. This time, click on “Request and Manage License Keys”. You should see a page similar to the following pop up.

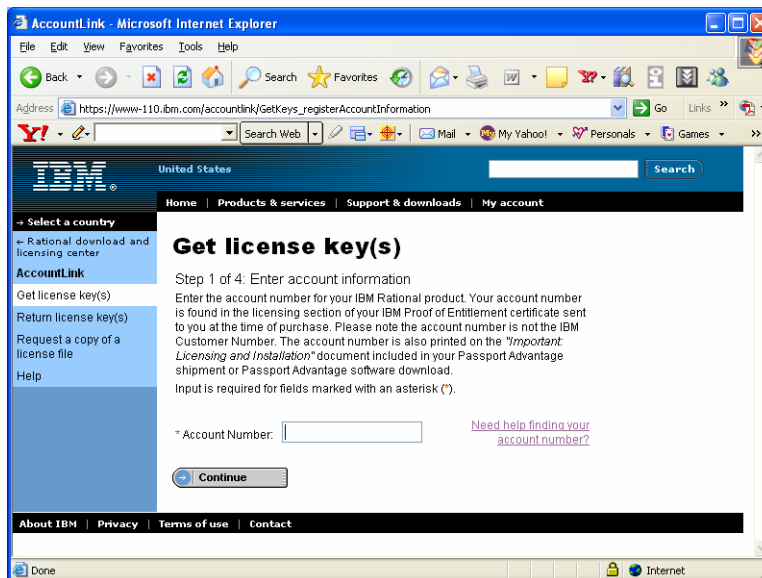




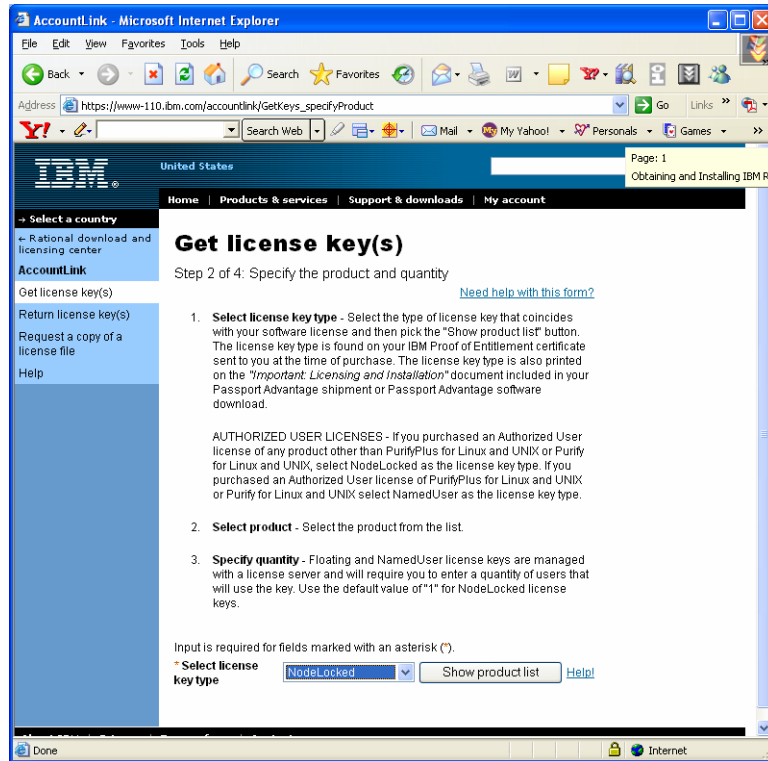
3. Click on the “AccountLink” hyperlink. The following will then pop up.



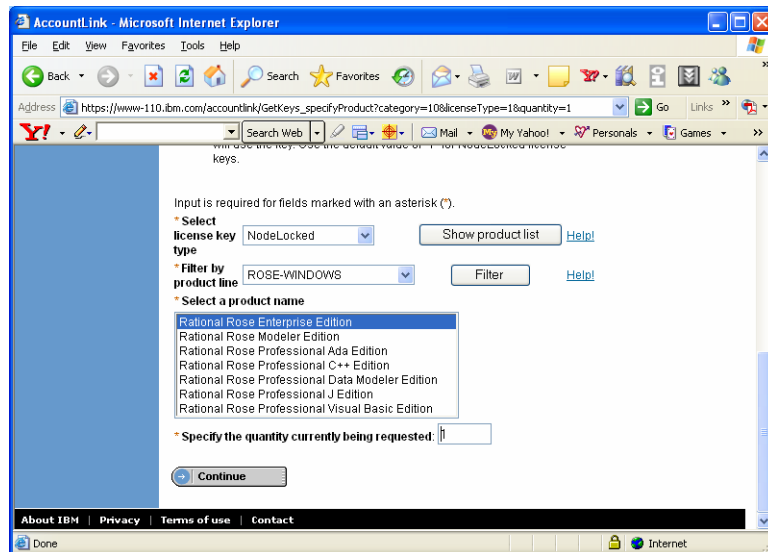
4. Click on “Get license key” link. A new page will load, prompting you for your account number. Enter GMU’s account number (to given to you in class).



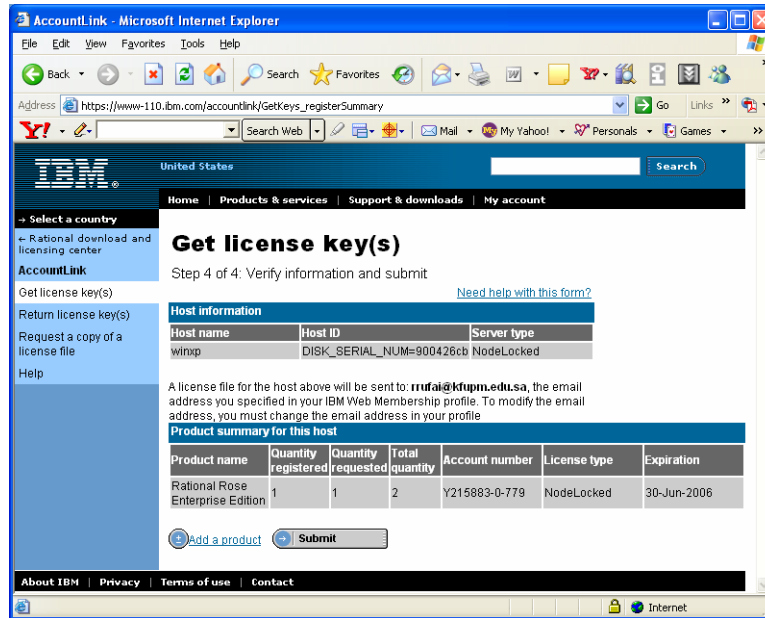
5. Enter the GMU account number and click “Continue.”
6. On the next screen, select “Node Locked” from the combo box and click on “Show product list.”



7. Select “Rational Rose Enterprise Edition” from the selection list and click “Continue.”



8. Supply your host name and Ethernet address. You might want to download the IBM tool to detect these for you.
9. Select you Operating system and click “Continue.” You’ll see the following page.



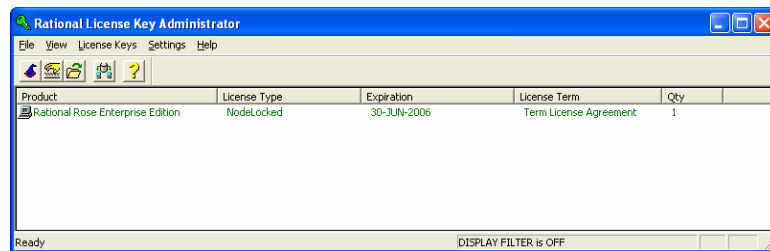
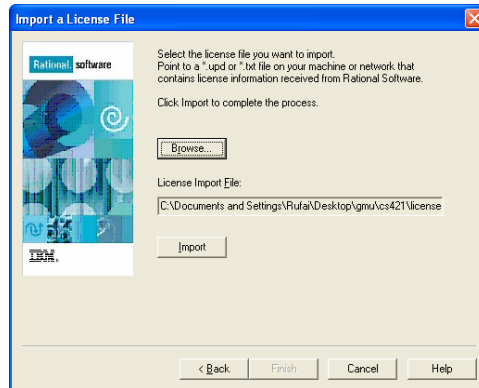
10. Submit the form and check your email for a license file. The next section guides you through the steps for importing this file into the License Key administrator.

## Importing a license file

1. The License Key Administrator Wizard launches automatically at the end of the installation. Now you can follow the licensing instruction. If the license manager does not launch automatically, you can run it through "Rational License Key Administrator" from the "Rational Software" folder (by choosing the menu: Start => Programs => Rational Software => Rational License Key Administrator).



2. Select "Import a Rational License File". Only "Rational Rose Enterprise Edition" will work with our licensing.
3. Then you will see the Rational License Key Administrator has your license information.

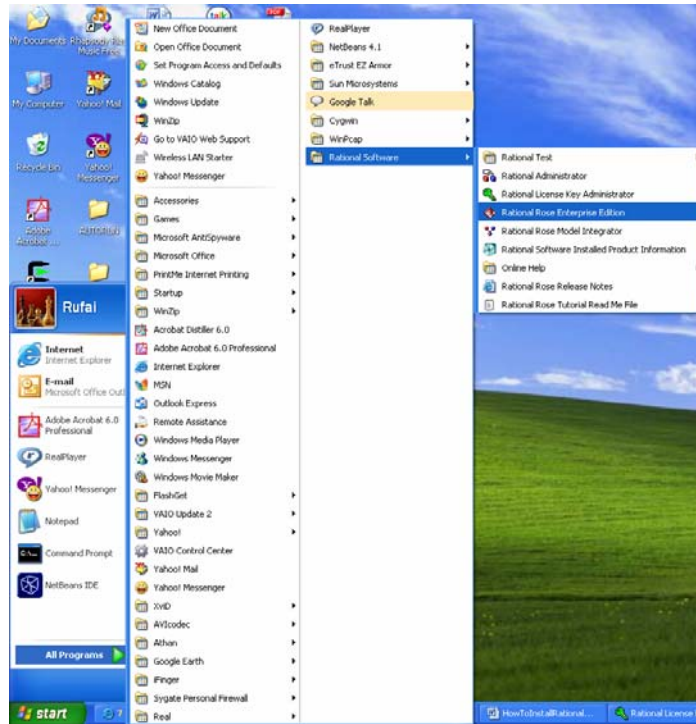


4. Once you acquire the license, you can *run the Rational Software*.

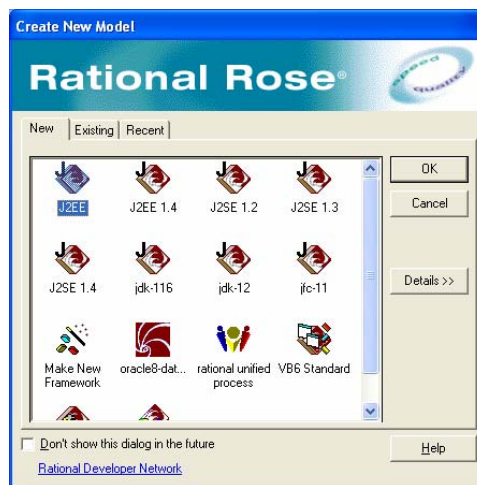
NB: Another way to import a license file is to simply double-click on the license file. The License Key Administrator will be invoked automatically and the rest is trivial.

## **Running Rose**

1. You can run “Rational Rose Enterprise Edition” from the “Rational Software” folder (by choosing the menu: Start → Programs → Rational Software → Rational Rose Enterprise Edition).



2. You should now see the following splash screen come on.



3. You may choose any model you want to create UML models. You are ready to use the Rational Rose.

