

CSE 516A: Multi-Agent Systems

Introductory Lecture
Prof. Sanmay Das

Plan for today

Welcome & introductions

What is this class about?

Class logistics

What is this course?

Multi-agent system: a system where multiple autonomous entities with different information sets and goals interact.

Let's see some examples of the kinds of things we're going to study

**Web**

News

Maps

Images

Videos

More ▾

Search tools

About 323,000,000 results (0.57 seconds)

Duke-NUS Medical School - Duke-NUS.edu.sg

Ad www.duke-nus.edu.sg/ ▾Be A **Medical** Leader of the 21st Century. Apply For Our Programs Now

University of Phoenix® - Phoenix.edu

Ad www.phoenix.edu/HealthCare/ ▾

Make a Difference. College Health Care Programs for the 21st Century.

Caribbean Medical School - umhs-sk.org

Ad www.umhs-sk.org/ ▾

Small Class Sizes. Financial Aid. \$50 Million Campus. 93% USMLE Pass

Medical Schools - US News & World Report

www.usnews.com/...schools/top-medical-scho... ▾ U.S. News & World Report ▾See the top ranked **medical schools** in primary care and research and find the best **medical school** for you at US News.

Harvard Medical School - Harvard University

hms.harvard.edu/ ▾ Harvard Medical School ▾

Official site providing an overview of academic and research programs, resources, news and events, and links to other web sites located throughout the Harvard ...

Best Medical Schools: Research - US News & World Report

grad-schools.usnews.rankingsandreviews.com ▾ Graduate Schools ▾See the top ranked **medical schools** for research at US News. Use the best **medical school** rankings to find the best research program for you.**Ads**

University of Nicosia

nicosia.sgul.ac.cy/Apply-Now ▾**Medical** Degree From St. George's
2015 Admissions Now Open!

UW School of Medicine

www.uwmedicine.org/ ▾Ranked Number 1 in Primary Care
by US News World Report

Aruba medical school

www.aureusuniversity.com/ ▾Most Affordable, Highest Rated. No
Mcat, US/Canada Residcy, USMLE Prep

Top Caribbean Med School

www.avalonu.org/ ▾Internationally Accredited. Best
clinical rotations. MCI approved.

UAG Medical School

www.uag.edu/ ▾Program of **Med.** in the Community
hands-on practice since year 1.

Sponsored Search Auctions

Each sponsored search listing occupies a slot

Advertisers pay per-click

Google's problem: how to allocate slots

Advertiser's problem: how much to bid for a click

Key idea: must reason about the actions of other (intelligent) agents

Aside: Why does Google clearly delineate sponsored results?

Reasoning about others

Can I get two volunteers to play a game?

B's action

A,
S
A
C
T
I
O
N

	Cooperate	Defect
Cooperate	1 year, 1 year	3 years, Free
Defect	Free, 3 years	2 years, 2 years

Time in prison for A, B

[Golden Balls 1](#)

[Golden Balls 2](#)

[Radiolab](#)



Best Medical Schools: Research

Ranked in 2017 | [Best Medical Schools: Research Rankings Methodology](#)

A medical career starts with finding the program that best fits your needs. With the U.S. News research, narrow your search by location, tuition, school size and test scores.

► [For full rankings, MCAT scores and student debt data, sign up for the U.S. News Med](#)

Research rank	School name	Tuition	Total medical school enrollment	M S
#1	Harvard University Boston, MA	\$58,050 (full-time)	720	
#2	Stanford University Stanford, CA	\$54,327 (full-time)	487	
#3	Johns Hopkins University Baltimore, MD	\$50,160 (full-time)	471	
#4	University of California—San Francisco San Francisco, CA	\$33,420 (in-state, full-time); \$45,665 (out-of-state, full-time)	633	
#5	University of Pennsylvania (Perelman) Philadelphia, PA	\$54,036 (full-time)	629	
#6	Columbia University New York, NY	\$57,634 (full-time)	660	
#7 Tie	Duke University Durham, NC	\$55,180 (full-time)	478	
#7 Tie	Washington University in St. Louis St. Louis, MO	\$60,798 (full-time)	507	

Incentives in voting

Polling for “top medical school”

3 candidates: Harvard, UCSF, JHU, WUSTL

Method: Rank candidates, assign 3,2,1,0 points

Person 1: Harvard > UCSF > WUSTL > JHU

Moments Ago
New York



ELECTION NIGHT IN AMERICA
4 42 36
HRS MIN SEC
ON CNN

BREAKING NEWS

TRUMP CASTS VOTE IN PRESIDENTIAL RACE

CNN

NAS ▲ 11.06

NEWSROOM

Incentives in voting

Polling for “top medical school”

3 candidates: Harvard, UCSF, JHU, WUSTL

Method: Rank candidates, assign 3,2,1,0 points

Person 1: Harvard > UCSF > WUSTL > JHU

You think: WUSTL > Harvard > UCSF > JHU

What would you do?

What happens when you graduate?

Apply to residencies

Alice	WUSTL > UCSF > Harvard	WUSTL	Chris > Alice > Bob
Bob	WUSTL > Harvard > UCSF	UCSF	Alice > Chris > Bob
Chris	Harvard > WUSTL > UCSF	Harvard	Alice > Chris > Bob

Suppose we match (Alice, UCSF), (Bob, WUSTL), (Chris, Harvard)?

Alice and WUSTL would rather be together than with their assigned matches: **unstable**

What about: (Alice, WUSTL), (Bob, UCSF), (Chris, Harvard) ?



Latest on Life & Arts



The best shows of London Fashion Week AW19 (part 2)



Daniil Trifonov and the London Symphony Orchestra — a showman to his fingertips



Things fall apart in Berlin Staatsoper's new Zauberflöte

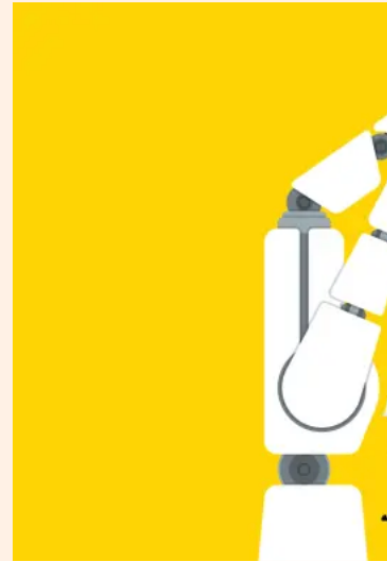
FT Magazine Life & Arts

+ Add to myFT

Just the job: how AI is helping build a better life for refugees

Known as 'Annie', new software aim

-
-
-
-
- Save



Helen Warrell NOVEMBER 20, 2018

If you had travelled thousands

CHART OF THE WEEK JANUARY 2, 2018

Making admissions more efficient



With economists' input, New York City developed a new admissions system that matched more students to high schools. Bigstock

QUARTZ

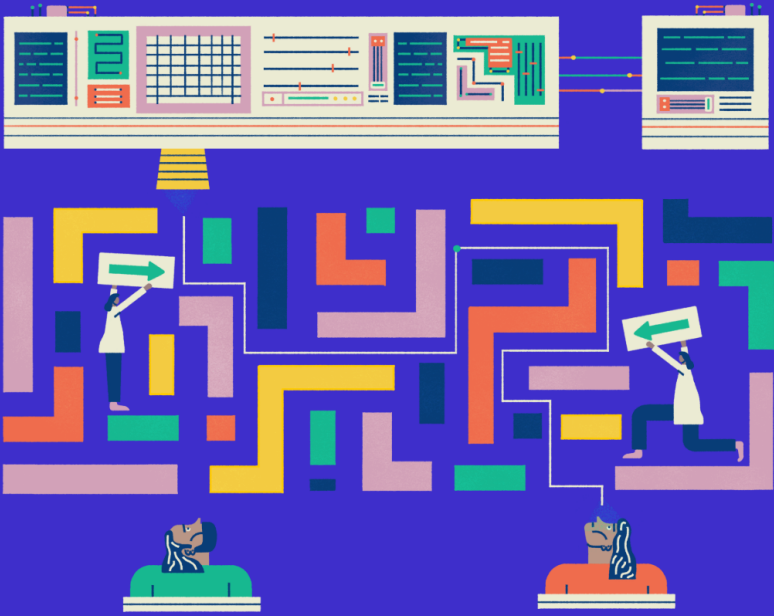
Prescription AI

This series explores the promise of AI to personalize, democratize, and advance medicine—and the dangers of letting machines make decisions.

THE BOTPERATING TABLE

How AI changed organ donation in the US

By Corinne Purtill • September 10, 2018



Couples match

Participating in an NRMP Match as a couple allows two applicants to link their rank order lists, usually for purposes of obtaining positions in the same geographic location. ... A couple will match to the most preferred pair of programs on their rank order lists where each partner has been offered a position.

[Couples in the Match - The Match, National Resident Matc...](#)
www.nrmp.org > [couples-in-the-match](#)







Just Allocations

Lots of work nowadays on Fairness, Accountability, Transparency, and Ethics (FATE) in AI

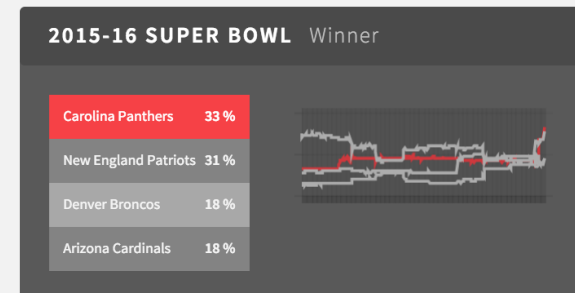
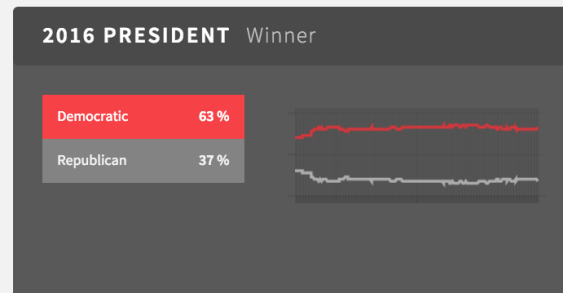
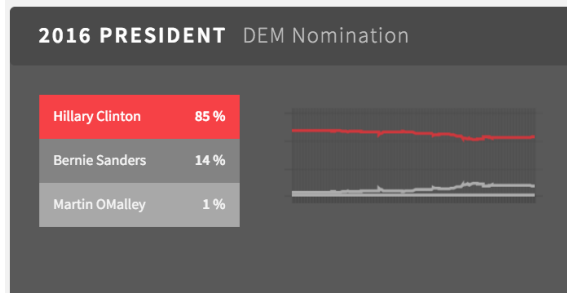
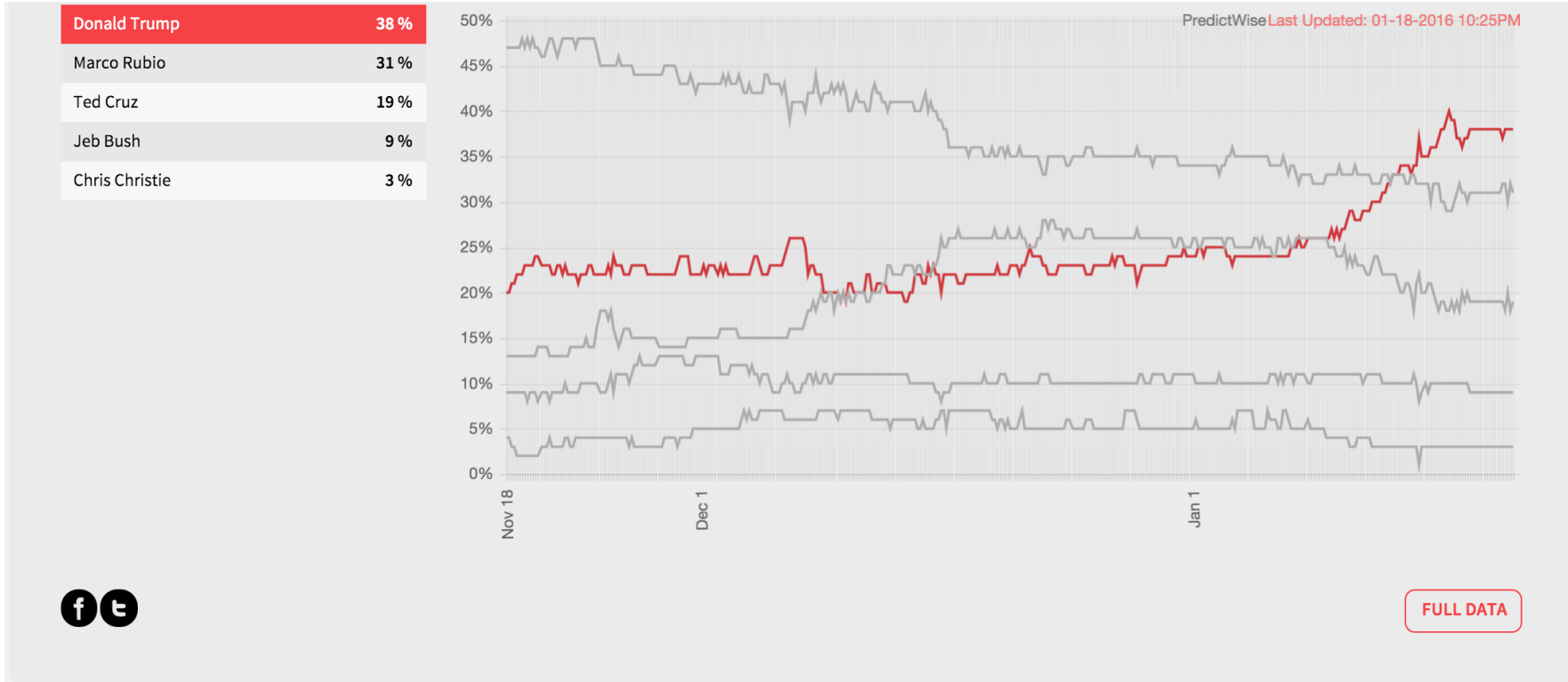
Related question in our context: (*Distributive / Social*) *Justice*

- How should goods, responsibilities, wealth, opportunities, and privileges be distributed among members of society?
- We will think about this in *local* contexts often characterized by non-market mechanisms

Who will win the 2020 Democratic presidential nomination?

Contract	Latest Yes Price	Best Offer	Best Offer
 Elizabeth Warren	33¢ 2¢↑	33¢	<input type="button" value="Buy Yes"/> <input type="button" value="Buy No"/> 69¢
 Joe Biden	26¢ 2¢↑	26¢	<input type="button" value="Buy Yes"/> <input type="button" value="Buy No"/> 75¢
 Bernie Sanders	17¢ 1¢↑	17¢	<input type="button" value="Buy Yes"/> <input type="button" value="Buy No"/> 84¢
 Andrew Yang	12¢ 1¢↑	12¢	<input type="button" value="Buy Yes"/> <input type="button" value="Buy No"/> 89¢
 Kamala Harris	11¢ NC	12¢	<input type="button" value="Buy Yes"/> <input type="button" value="Buy No"/> 89¢
 Pete Buttigieg	8¢ NC	9¢	<input type="button" value="Buy Yes"/> <input type="button" value="Buy No"/> 92¢

In January 2016...



Where do these numbers come from?

A prediction market

Applies principles from information aggregation in financial markets to predicting event probabilities

Does it work? Why? What's the meaning of a stock price?

Syllabus and course logistics

Let's look over the syllabus and discuss